

C527



rinstrum

SMART WEIGHING SOLUTIONS



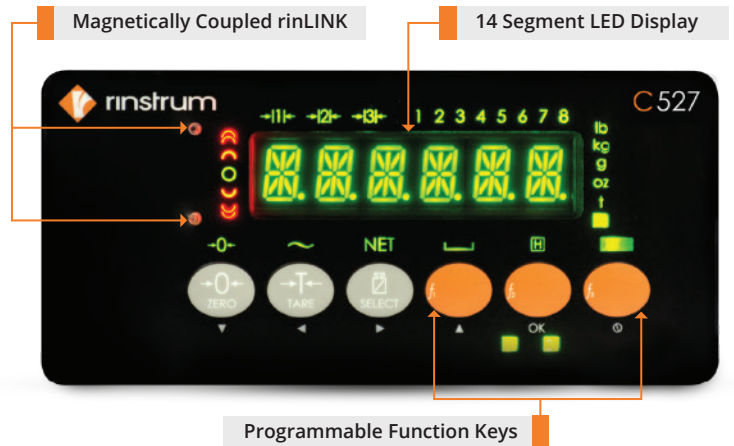
Rinstrum C527 Stainless Steel Indicators

C500 Series is Rinstrum's latest industrial process controller equipped with modern interfaces and increased accuracy. The C500 Series is the culmination of 25 years of innovative weighing controller design, bringing together the best of our R400 and 5000 Series.

The C527 is IP65 rated waterproof stainless-steel housing unit with all C500 series weighing capabilities. It comes with wall, desk and pole mounting options and is available as either a factory fit AC or DC version.

Features

- Built in USB and Ethernet connections.
- 10,000d @ 0.5 uV/d
- 16 x 350Ω load cells
- IP65-rated stainless steel housing
- Wall, Desk & Pole mounting options
- 8 set points (option)
- AC and DC versions
- Embedded web server
- Ethernet and USB host and slave standard
- Lua programmable option
- MODBUS TCP/IP, ASCII, RTU



Firmware Versions

C500-K501

- C500 series Main weighing application

L900-500

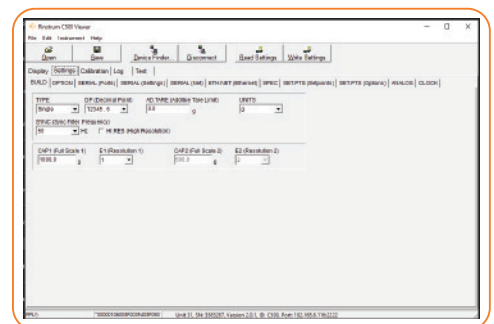
- Rinstrum C500 Licensed Developer Package allows telnet and FTP connections to the indicator to permit Lua development.

L900-501

- Ethernet/IP provides access to the indicator via the Ethernet/IP industrial protocol.

Superior diagnostics and support

- Range of diagnostic tools and features
- Force Output and Test Input functions
- Allow the installer to specifically test I/O to assist in site setup
- Ability to swap modules in and out without recalibration of the indicator



C500 Packages

View Syslog

rinLIB-C500 version 2.2.0

Search

Modules

- rinApp
- rinLibrary.Device.Analog
- rinLibrary.Device.Buzz
- rinLibrary.Device.Command
- rinLibrary.Device.Dialog
- rinLibrary.Device.FSM
- rinLibrary.Device.Keys
- rinLibrary.Device.LCD
- rinLibrary.Device.Passcode

List of installed packages

Software	Version	Operation
C500-K501	1.0.3	Uninstall
L900-502-M07	1.0.9	Uninstall

rinLIB-C500: API for programming the C500 in Lua

Copyright © 2013-2016 Rinstrum.

This reference is correct for library version 2.2.0 only.

If you do not know where to begin, please start with the Introduction.

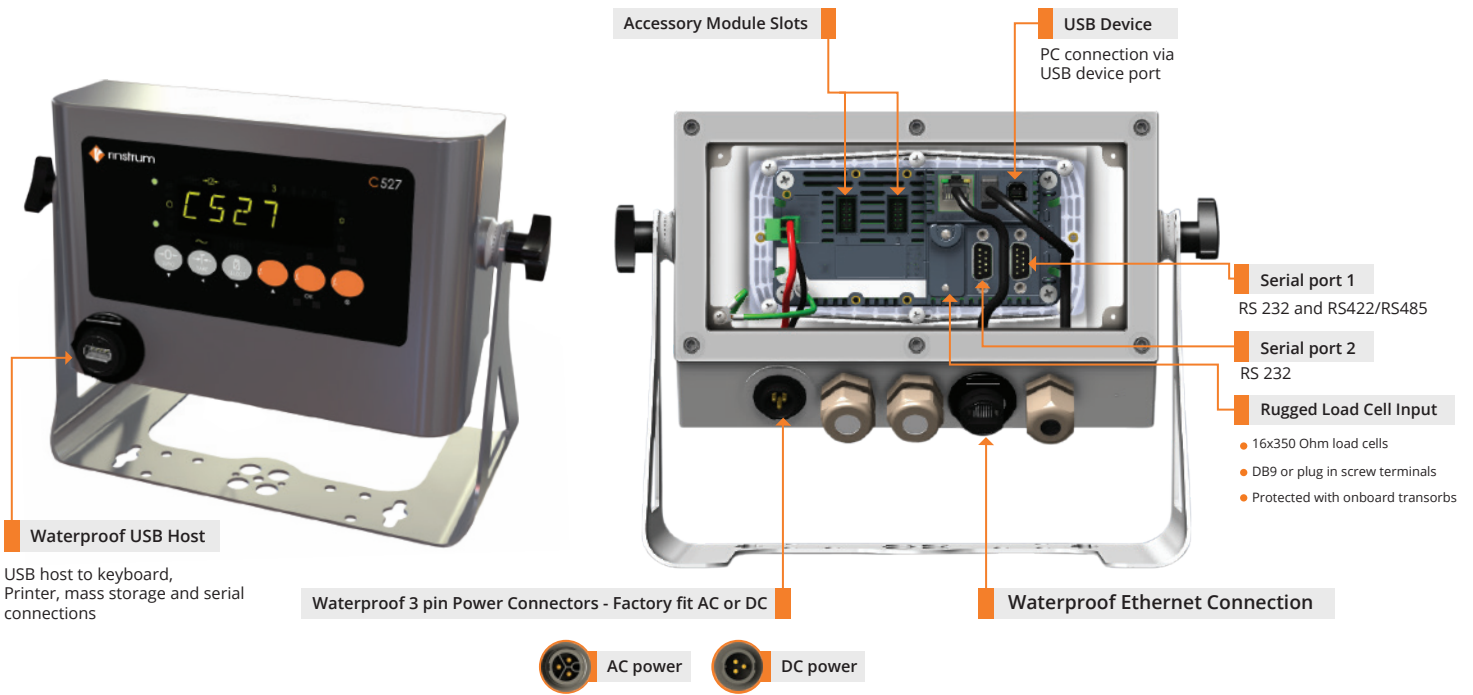
Modules

Module	Description
rinApp	Module manager for L401
rinLibrary.Device.Analog	Analogue Functions.
rinLibrary.Device.Buzz	Buzzer Handling.
rinLibrary.Device.Command	Library for High level command support.
rinLibrary.Device.Dialog	Dialog Control.
rinLibrary.Device.FSM	Finite State Machine Infrastructure.
rinLibrary.Device.Keys	Key Handling.

Lua Programmability



- Built in embedded Lua scripting.
- Enhance the functionality by installing a range of application packages.
- Open source library and comprehensive API enable you to write your own applications or engage Rinstrum to write them for you through our fixed price Lua MAX programme.
- Use the embedded web server to create browser based user interfaces.



Rugged Load Cell Input

Designed to take 16x350 ohm load cells @0.25uV/D; providing flexibility and reducing the need for summing hardware, simplifying the installation and saving money. The load cell input is protected with onboard transorbs to limit damage from external voltage surges.

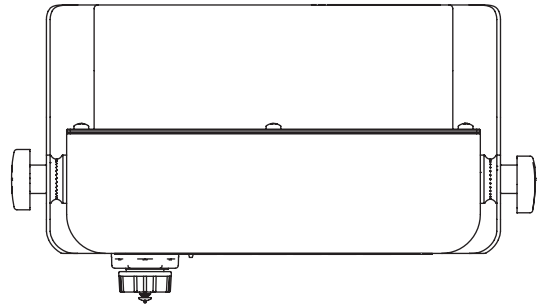
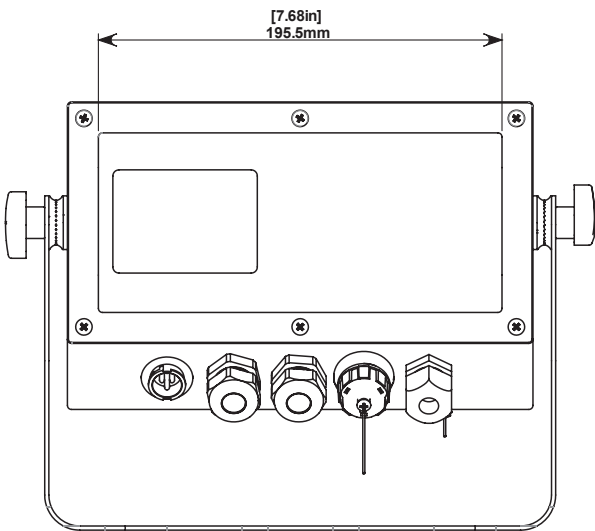
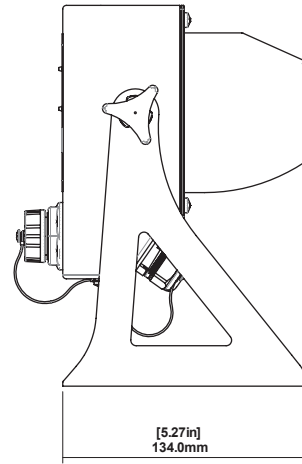
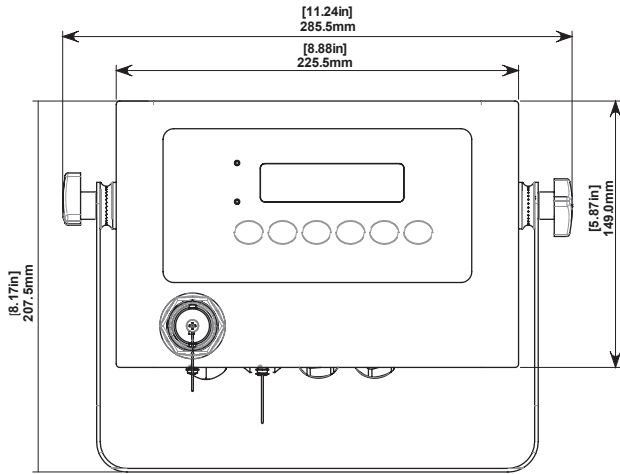
rinLINK for establishing a temporary connection to a PC

The rinLINK provides an isolated optical serial connection directly on the front of the indicator. It is magnetically coupled for easy access in situ for updates/setup of the indicator, saving the installer time and effort.

Full Range of Module Accessories



RS232/ RS232 Module	RS485/RS485 Module	AC Module	Analog Output	I/O Module
<ul style="list-style-type: none"> Electrically isolated RS232 serial communication Status LEDs 	<ul style="list-style-type: none"> Electrically isolated RS485 networking Status LEDs 	<ul style="list-style-type: none"> 110-240 VAC in 12 VDC out Accessory power outlet 	<ul style="list-style-type: none"> 4-20mA or 0-10V analog output Electrically isolated Fast 400Hz update 2 configurable I/O 	<ul style="list-style-type: none"> 8 I/O Configure as input or output Electrically isolated Status LEDs Outputs – high current DC Active high I/O



Local Dealer



Contact Us