

C500



rinstrum
SMART WEIGHING SOLUTIONS



Bringing together 25 years of smart weighing

The C500 Series is Rinstrum's latest industrial process controllers, equipped with modern interfaces, increased accuracy and user programmability. The C500 Series is the culmination of 25 years of weighing indicator design experience.

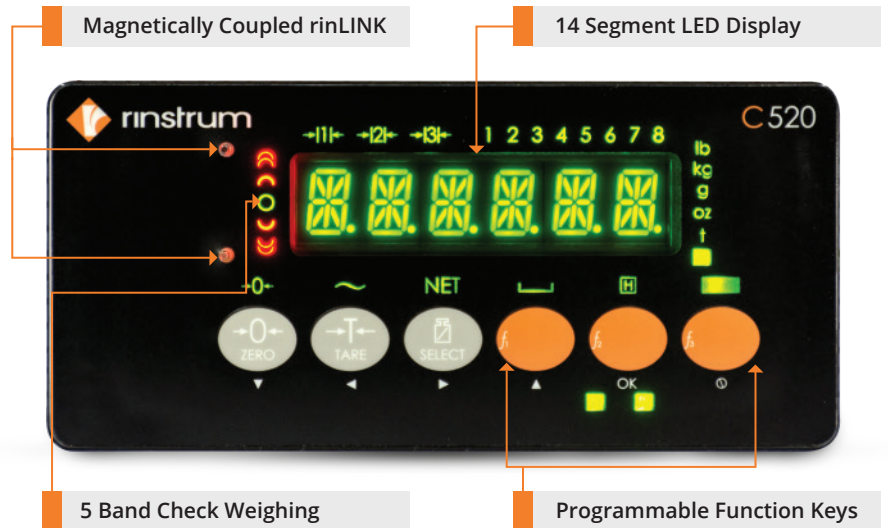
Models:


- C520, panel mounted or desk stand with a 14 segment LED display and 6 keys
- C530, no display, optimized for DIN rail or surface mounting for use with HMI



Features

- Compact ½ DIN standard housing
- 10,000d @ 0.5 μ V/d OIML R76
- European WELMEC compliant legal for trade data storage
- Embedded Linux operating system
- Lua programmability
- Modbus ASCII, RTU, TCP/IP
- Global technical support using Ethernet or RinLINK cable





C500 Packages

[View Syslog](#)

List of installed packages

Software	Version	Operation
C500-K501	1.0.3	Uninstall
L000-S02-M07	1.0.9	Uninstall

rinLIB-C500 version 2.2.0

rinLIB-C500: API for programming the C500 in Lua

Copyright © 2013-2016 Rinstrum.
This reference is correct for library version 2.2.0 only.
If you do not know where to begin, please start with the [introduction](#).

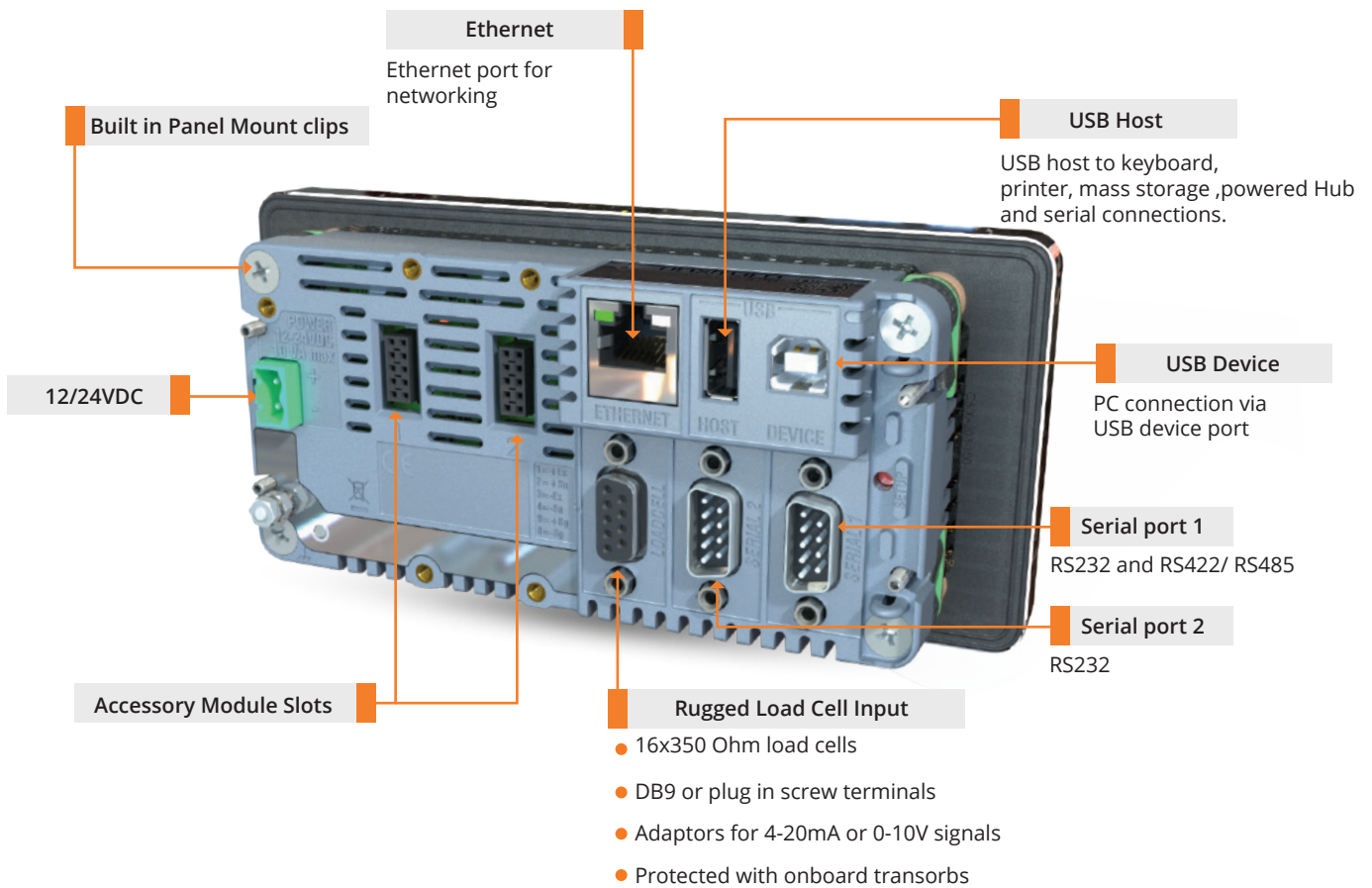
Modules

rinApp	Module manager for L401
rinLibrary.Device.Analog	Analogue Functions.
rinLibrary.Device.Buzz	Buzzer Handling.
rinLibrary.Device.Command	Library for High level command support.
rinLibrary.Device.Dialog	Dialog Control.
rinLibrary.Device.FSM	Finite State Machine Infrastructure.
rinLibrary.Device.Keys	Key Handling.

Lua Programmability

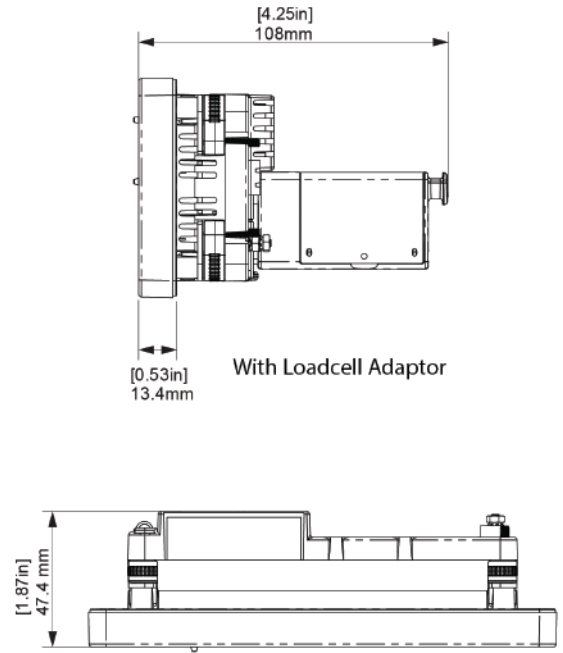
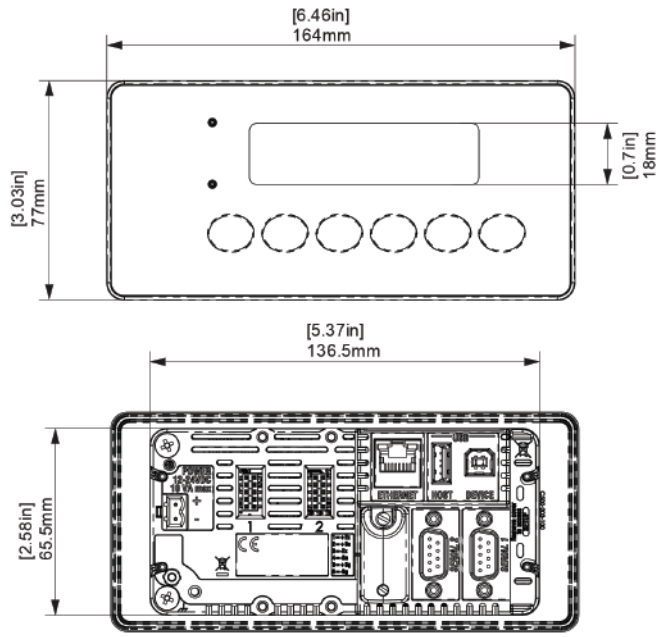


- Built in embedded Lua scripting.
- Enhance the functionality by installing a range of application packages.
- Open source library and comprehensive API enable you to write your own applications or engage Rinstrum to write them for you through our fixed price Lua MAX programme.
- Use the embedded web server to create browser based user interfaces.

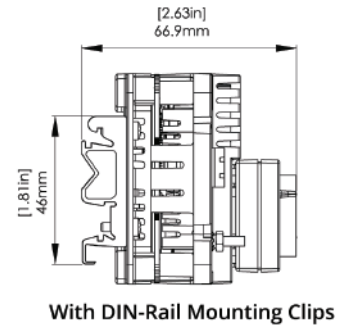
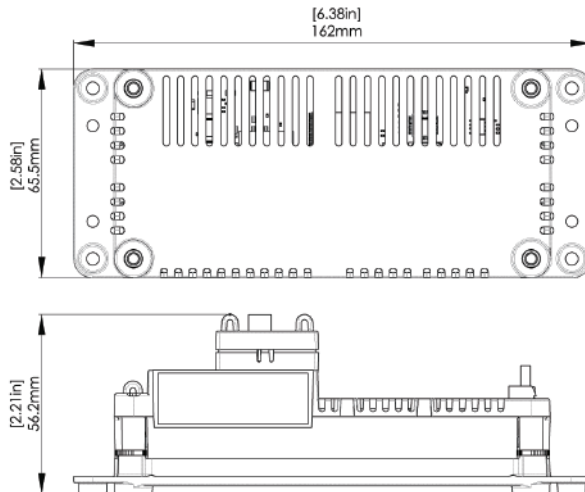


RS232/ RS232 Module	RS485/RS485 Module	AC Module	Analog Output	I/O Module
<ul style="list-style-type: none"> Electrically isolated RS232 serial communication Status LEDs 	<ul style="list-style-type: none"> Electrically isolated RS485 networking Status LEDs 	<ul style="list-style-type: none"> 110-240 VAC in 12 VDC out Accessory power outlet 	<ul style="list-style-type: none"> 4-20mA or 0-10V analog output Electrically isolated Fast 400Hz update 2 configurable I/O 	<ul style="list-style-type: none"> 8 I/O Configure as input or output Electrically isolated Status LEDs Outputs – high current DC Active high I/O

C520



C530



Local Dealer



Contact Us