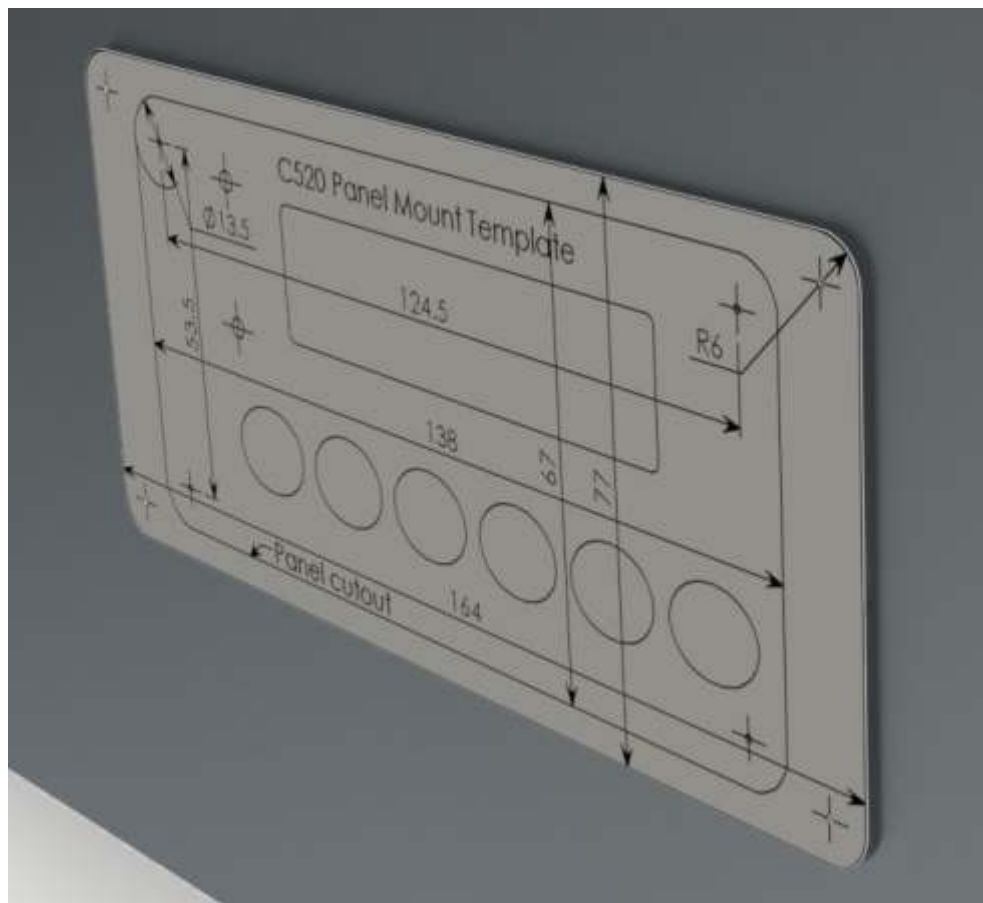


Tools needed:

No 0 Pozzi, Philips or 3mm flat blade screwdriver.

Drill and panel cutting tool.



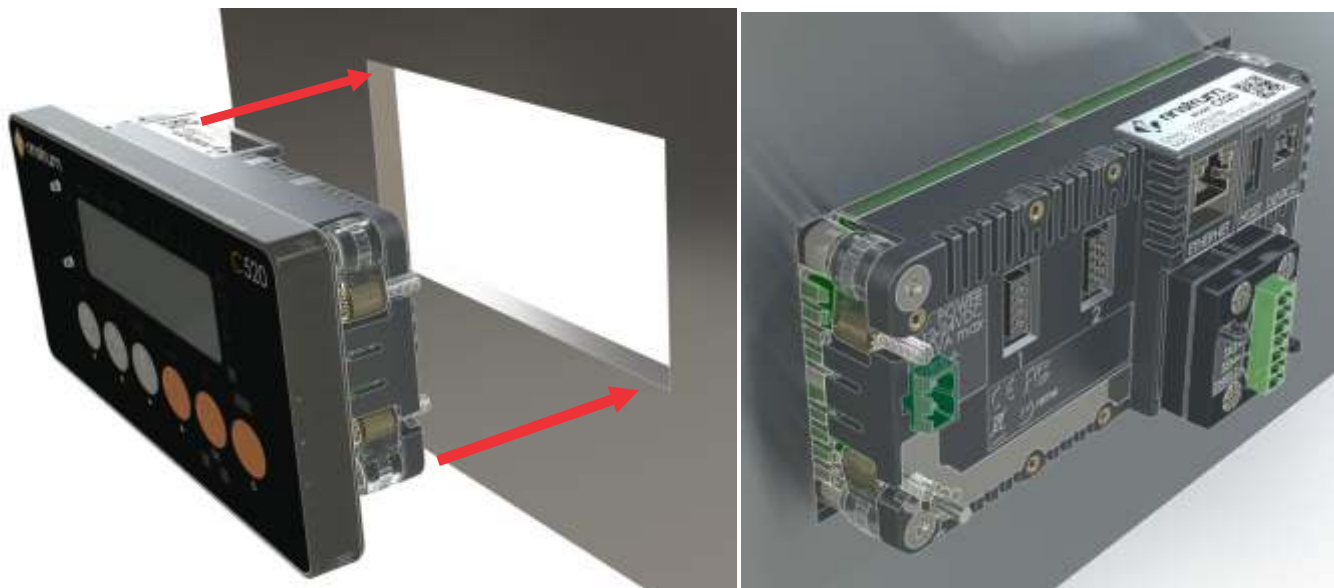
The C520 indicator is designed to fit into a IEC 61554 138x68mm standard instrument mounting hole, commonly known as a half DIN standard instrument mount hole which refers to the old DIN standard 43700.

Note, however, that the Rinstrum C520 unit bezel is 164 x 77 mm, not the standard 144 x 72mm. This is so it matches the old Rinstrum 5000 instrument for which it is a replacement.

The corners of the C520 are rounded, which means the hole can be cut by drilling the corners and cutting between the holes, instead of requiring a square cornered hole. It will also fit a square corner hole.

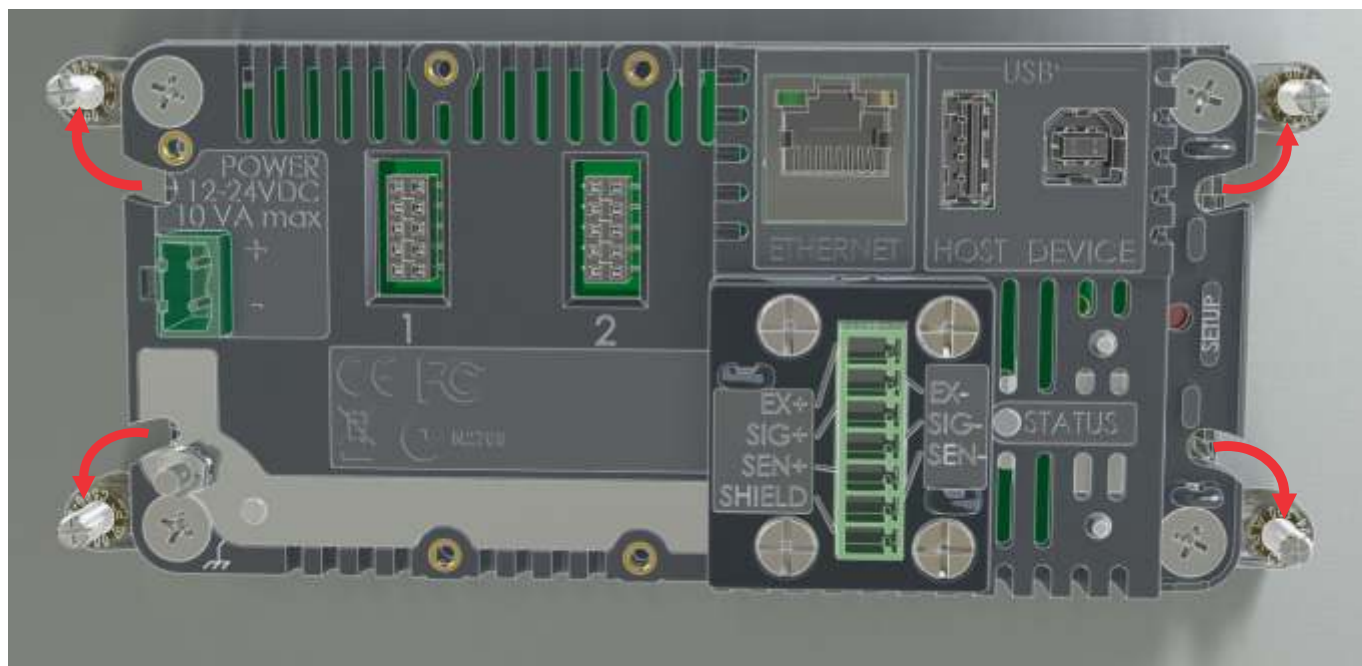
Panel thickness can be from 3mm to 10mm thick.

The dimensions of the hole and bezel are printed on the cutout template provided with the C520. For convenience, this template is self adhesive, and can be applied to the intended surface mounting position, and used to drill the holes for the corners and cut the rest of the hole out. A maximum of 13.5mm diameter drill can be used to drill the corners of the cutout. The outer edges of the template indicate the outer edge of the bezel of the instrument.

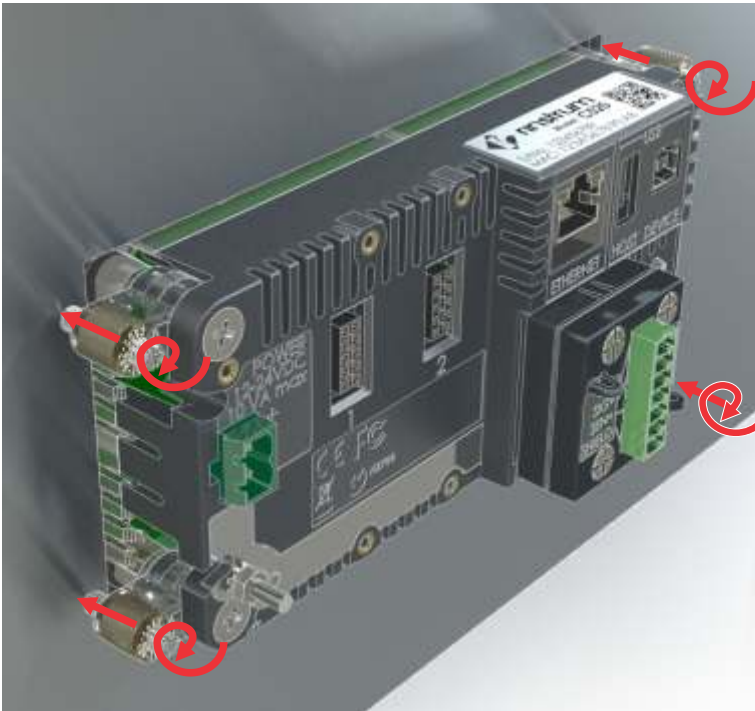


Ensure the clamp screws are backed out so no screw protrudes out the front of the mount brackets, the mount brackets are swung into the body of the C520 and the AC PSU module is not fitted to the indicator.

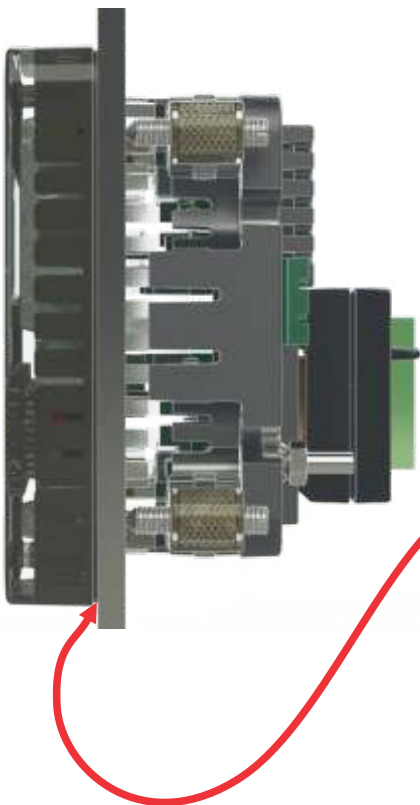
Insert the C520 from the outside surface of the panel into the mounting hole.



Swing the brackets out to approximately horizontal positions.



Sc re w e a c h c l a m p s c r e w i n t o f i r m l y
p r e s s i n t o t h e b a c k o f t h e p a n e l .



The c l a m p s c r e w s s h o u l d b e t i g h t e n e d u n t i l t h e v i s i b l e
o u t e r e d g e o f t h e s e a l o n t h e b a c k o f t h e f l a n g e o f t h e
i n s t r u m e n t i s a g a i n s t t h e f r o n t o f t h e p a n e l . T h i s w i l l
e n s u r e t h e s e a l i n g r i d g e s o n t h e b a c k o f t h e f l a n g e
s e a l a r e c o m p r e s s e d . T h e e f f e c t i v e n e s s o f t h e s e a l w i l l
b e d e p e n d e n t o n t h e f r o n t s u r f a c e f i n i s h , s t i f f n e s s a n d
f l a t n e s s o f t h e p a n e l i n t o w h i c h t h e u n i t i s f i t t e d .

O n c e T h e C 5 2 0 i s f i t t e d t o t h e p a n e l , a n y a c c e s s o r y
m o d u l e s o r t h e A C P S U m o d u l e c a n b e f i t t e d t o t h e
r e a r o f t h e i n d i c a t o r i f r e q u i r e d .