

## Application Note: R320 Kits Overview (AU)

### R320 - Panel Mount and AC Plug pack if required



**R320-K302-A**  
Panel Mount Indicator



**A10001**  
110-240VAC transformer to bare wires (12VDC output).

### R320 with a Desk Stand (4\*AA battery) and AC Plug pack



**R320-K302-A**  
Panel Mount Indicator



**M3001**  
Desk Mount



**A10021**  
110-240VAC transformer to a 2.1mm DC connector  
(12VDC 2.5A output).

#### M3001 Desk Mount, ABS

The M3001 Desk Mount rear enclosure has a power input socket on the side that will directly power the R320 indicator while bypassing the AA batteries. Insert the AC transformer's DC connector to use external power.

When the AC transformer power is removed the indicator will revert to battery power if 4 AA batteries are installed. Aftermarket rechargeable batteries can be used but should be charged externally from the indicator.

The M3001 is compatible with the M3002 stainless steel swivel bracket for wall mounting and the M3007 stainless steel stand for pole mounting.



\*Batteries and Plug pack sold separately

### R320 with an IP65 Waterproof Desk Stand and AC Plug pack



**R320-K302-A**  
Panel Mount Indicator



**M3003**  
IP65 Desk Mount



**A10001**  
110-240VAC transformer to bare wires (12VDC output).

#### M3003 IP65 Desk Mount, ABS

Using a M3003 rear enclosure will provide IP65 water tight protection to the indicator.

Two cable glands (user installed) are provided to allow for cable sealing. Up to four can be fitted. The AC transformer is required to supply power. The AC transformer uses a round cable so that a proper seal is made when passed through the cable gland.

Compatible with the M3002 swivel bracket for wall mounting and the M3007 stainless steel stand for pole mounting.



**R320 with an IP65 Rechargeable Battery Option**



**R320-K302-A**  
Panel Mount Indicator



**M3103**  
IP65 ABS Desk Stand and Battery Pack, NiMH 2.5 AH

**M3103 Battery Pack, NiMH 2.5 AH ABS**

The M3103 rear enclosure includes a rechargeable NiMH battery. The Indicator will operate while being charged.

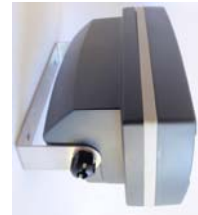
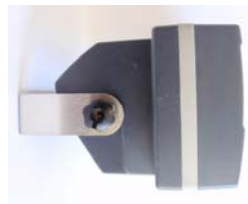
- An Intelligent NiMH battery charger;
- Internal NiMH 2500mA rechargeable battery;
- An M3003 desk stand housing with charger input socket.

Compatible with the M3002 stainless steel swivel bracket for wall mounting and the M3007 stainless steel stand for pole mounting.



**Wall Mounting and Pole Mounting**

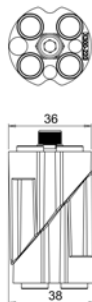
**M3002**  
Wall Mount



**M3007**  
Pole Mount



**A10018**  
Insert for Pole Mounting



For more information refer to the Reference Manual for these products