

Viewer: PC Software for Indicator Emulation

Overview

Use Rinstrum's free software tools to emulate the indicator on your computer.

View300 – for R320/R323 and X320

- Allows for fast simple indicator setup via a PC.
- Enter custom print strings through Viewer

View400 - Fast efficient R400 Indicator setup via PC

- Allows for fast simple indicator setup via a PC. View400 displays the complete menu structure of the indicator on the PC with convenient drop down menus for setting selection.

Save400 - Reading and writing Indicator setup

- Save400 is a software tool that reads and writes R400 indicator setup and configuration - this allows for a setup to be exported for update and then re-imported.

Viewer/ Indicator variants

X320	View300
R300 Series	View300
R400 Series	View400 and Save400
2100	2100 Viewer
5000	Viewer V1 Hardware/V2 Hardware
5100	5100 Viewer
5200	5200 Viewer
5230	5230 Viewer
6500 Remote	6500 Viewer
1203	1203 Viewer

1. Establishing a temporary connection to a PC using a rinLINK

The rinLINK provides an optical serial connection onto the front of an indicator or remote (R400, R300, X320, D300, D640 and D740)

There are two types of rinLINKs:

- A10005 serial connector
- A10012 USB connector (provided with a CD for drivers)

When using a USB rinLINK for the first time on a PC, the driver will have to be loaded.

- The driver is located on the CD that comes with the rinLINK or on the View 300 and View400 pages in the software download section (dealer log on required).



Connect the USB (or DB9) end of rinLINK to PC and optical head to unit for connection

2. Download Viewer Software

- Log on using Dealer Logon at www.rinstrum.com
- Select Product Page relating to the Viewer that is required – scroll to Product Downloads section

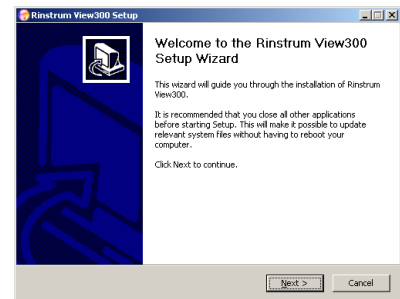
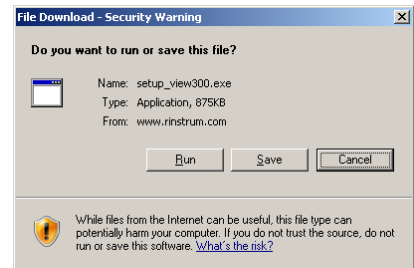
Product Downloads

The following files are available for download for the View300. Ensure you select the correct documentation for your unit's software version. Check back regularly for software and other updates.

To download files, please click on a filename below. A save dialogue box should appear allowing you to specify your save location. If a save dialogue box does not appear, right click on the link and select save target as.

Files

- ▶ Software - Rinlink USB Drivers - 31 Mar 2010 - 2317KB (ZIP) file
- ▶ Software - Viewer R3xx V2.23 - 31 Mar 2010 - 876KB (EXE) file



- Select the Viewer Software and run to install on your PC, follow prompts

3. Establish PC-Unit connection

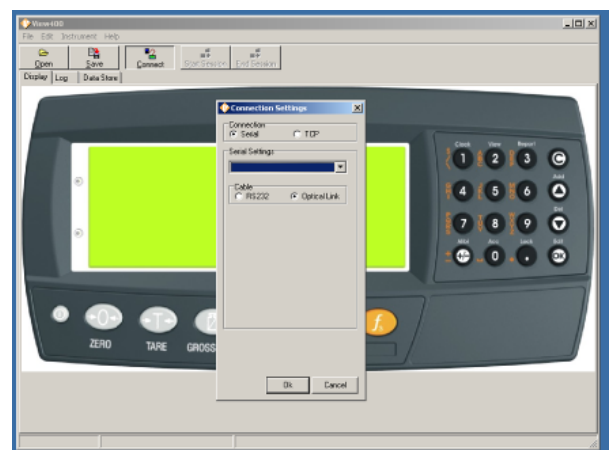
- rinLINK connections for R400, R300, X320 etc.
- For 5000 series, 2100 series, 1203, 6500 and 2101 remote displays connect via a serial communications link to your PC - refer to reference manual for unit.



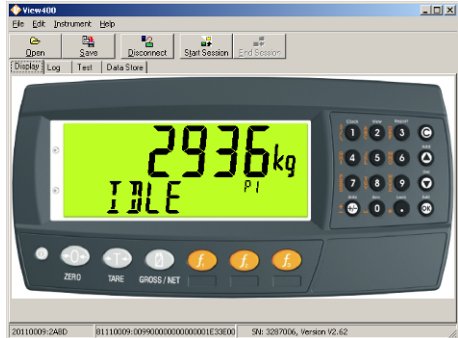
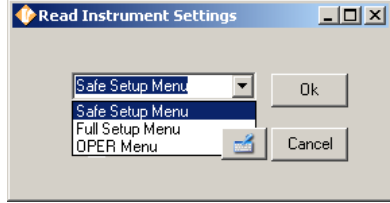
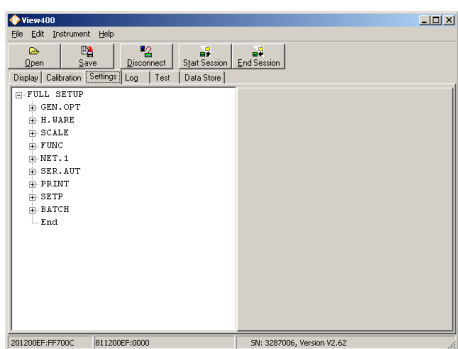
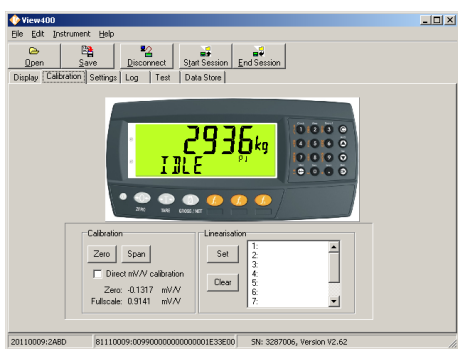
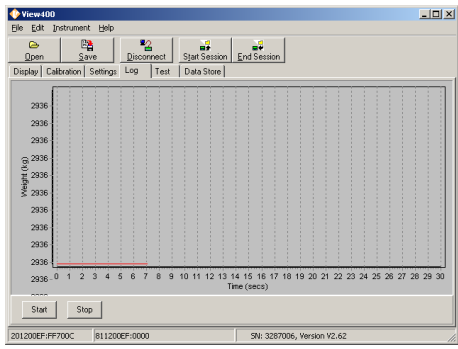
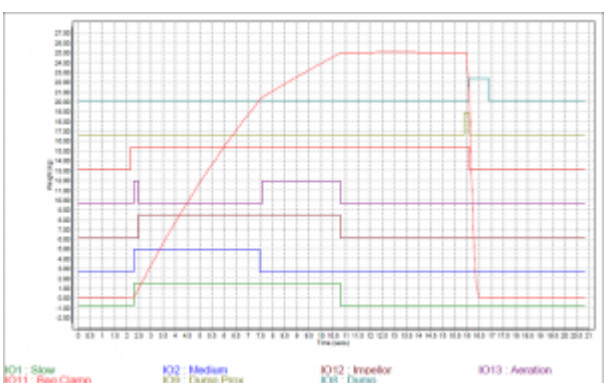
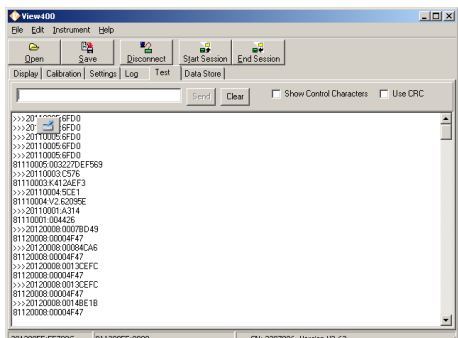
4. Run Viewer Program

Start the viewer program and press Connect.

- Viewer will detect the communication ports. Click the down arrows box and select the communication port that the rinLINK is connected too.
- Click Start Session/Read settings.
- It is a good idea to save the .RIS file as a backup first before changing settings.
- The Display tab displays the indicator and allows for buttons to be clicked on the PC the same as using the keys on the indicator.



5. Using Viewer

	<p>Start Session to go into setup - select type of session Safe Setup/Full Setup/Operator Menu</p> 
<p>Full Setup menu tree is available through the Settings Tab</p> 	<p>Calibration and Linearisation data is available through the Calibration Tab</p> 
<p>Log to view real time trace of weight and digital points against time</p> 	<p>Use left mouse button to select an area and zoom in on Log data, left/right arrows scroll horizontally</p> 
<p>Send commands via the Test page</p> 	<p>Download, view and extract/save DSD records</p> 