

Manuals Created for C500 modules (M500 series)

The M500 series of modules for the C500 series of indicators have been created. These modules include

- M5104 – Power Supply
- M5201 – RS232/RS232 Serial Isolated
- M5203 – RS485/RS485 Serial Isolated
- M5301 – 8 Input / Output Module
- M5401 – Analogue Output Module

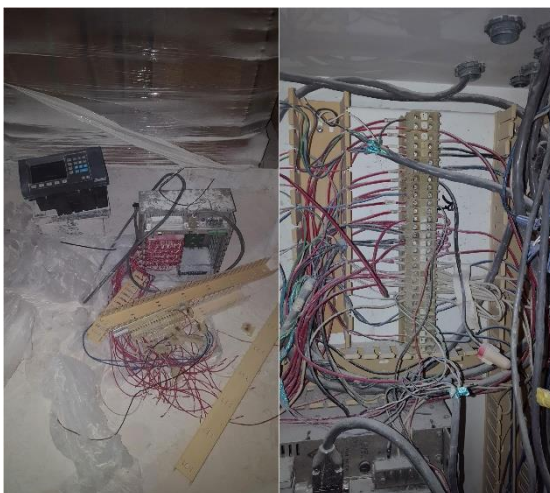


These manuals are available on the [C500 Series - Modules and Accessories Webpage](#) on the Rinstrum website.

Rinstrum Provides Streamlined Solution for Murphy Wall Products

Murphy Wall Products recently installed a R423-MAX Batch Cabinet to replace their existing non-functional weighing solution.

The Rinstrum solution provides a neat and safe design that is less susceptible to damage. The photographs provided illustrate the difference between the previous system (in a state of disrepair owing to damage caused by rodents) and the more streamlined system provided by Rinstrum.



Previous Installation – the mess of wires was susceptible to rodent damage



Rinstrum Solution provides a more streamlined design. R423 panel mounted indicator on display

SEKO Forklift Scales uses R420 in Custom Configuration

Rinstrum Client SEKO Forklift Scales had a recent installation where an R420 Indicator was installed in a forklift weighing system. The R420 was programmed to input the Part Number as a variable and to output to a ZEBRA printer.



R420 in Custom Configuration



Customised Printout with Part Number

AUSTRALIA
Rinstrum Pty Ltd

Ph: + 61 7 3216 7166
Email: sales@rinstrum.com

USA
Rinstrum Inc

Toll Free +1 877 829 9152
Ph: +1 248 680 0320
Email:
sales.usa@rinstrum.com

www.rinstrum.com

EUROPE
Rinstrum Europe GmbH

Ph: +49(0)2173 165 62- 10
Email: sales.eu@rinstrum.com